



Manual Rev.
1.01
5/09

This manual is property of Redline Tuning LLC. Any unauthorized duplication or use without written permission from Redline Tuning LLC, violates Copyright laws.
Copyright © 2003 Redline Tuning LLC. All Rights Reserved.



1995-2001 Ford Explorer & Mercury Mountaineer QuickLIFT Installation Guide

Step 1 - Unpack QuickLIFT system and verify contents.

Remove all items from the packing tube. You should have the following before beginning:

- * (2) Gas springs (**RT-QL-200-7A**) - Be sure to cycle them a few times before installing.
- * (8) 3/16" #2 Multi-grip Rivets
- * (4) Steel ball-stud mounting brackets
- * Printed Color Instructions



Step 2 - Gather the required tools.

Please gather the following tools before you begin the installation:

- * Power Drill
- * 3/16" or indexed #11 drill bits
- * Fine permanent marker or felt tip pen
- * Tape Measure or ruler
- * Masking Tape
- * Hammer & center punch
- * Rivet gun, capable of 3/16" rivets (most brands can handle this size)

Note: Only use the rivets supplied in the QuickLIFT system.

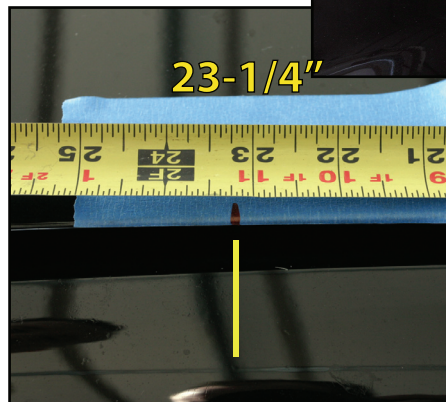


Recommended: Craftsman standard or Swivel Riveter (shown - 974749) - \$9.99 to \$17.99

Step 3 - Mark centerline of hood bracket location.

A. Close your hood.

B. Measure from the hood's corner near hinge along the edge. Measure a length of **23-1/4"** and place a mark on a piece of masking tape along the edge of the hood. This measurement will be used as the center of the hood bracket in the next step.

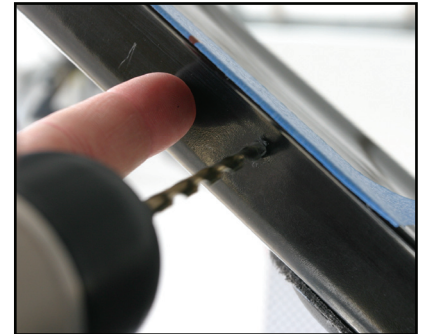


Step 4 - Align bracket and mark 1st hole for drilling.

A. Align the center of the bracket with the mark you just made on the hood. You will need to view the hood directly from the side to align the bracket. The bracket should sit on the side of the hood frame with the ball stud facing down or toward the vehicle. The back of the bracket should be tucked up against the hood's skin.

B. Holding bracket in place, mark the center of the lower hole using a permanent felt tip marker. Use photos from this step and others to clarify mounting location.

C. Set bracket aside. Using a center punch and a hammer, tap the center of the mark you just made (this indentation will help guide the drill bit and keep it from wandering). Check placement before continuing.



Step 5 - Drill #11 indexed bit hole, or 3/16" hole.

A. Carefully drill the hole as shown to the right using a **(#11 indexed bit)** or **(use 3/16" bit if #11 bit is not available)**.

If you do not have a #11 indexed bit, you can use the 3/16" bit, however you may have to test fit the rivet and slightly ream hole until rivet fits tightly through bracket and hole - 3/16" is slightly smaller than the #11 bit.

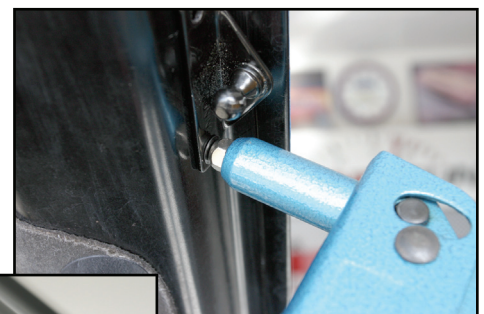
For those who do not have a depth-stop, wrap a piece of electrical tape around the drill bit about 1/4" from the tip to prevent the bit from denting the hood skin. Use new and sharp bits!

Step 6 - Rivet lower end of bracket to hood.

A. Hold the bracket in position.

B. With the bracket lined up again, place a **rivet** through the bracket and hole with the long stem sticking outward. The rivet may require a few twists while pushing it in.

C. Check to be sure your rivet gun has the **3/16"** rivet head installed, then slide rivet gun onto rivet. While applying downward force on rivet and bracket, firmly squeeze riveter handle multiple times until rivet gun pops and snaps off the rivet stem.



Step 7 - Drill and rivet second hole.

A. Reposition or rotate bracket into the proper position against hood lip. Carefully drill the second hole through bracket hole and hood frame.

Wrap end of drill bit 1/4" down from tip with electrical tape to keep drill bit from pulling through and hitting hood skin.



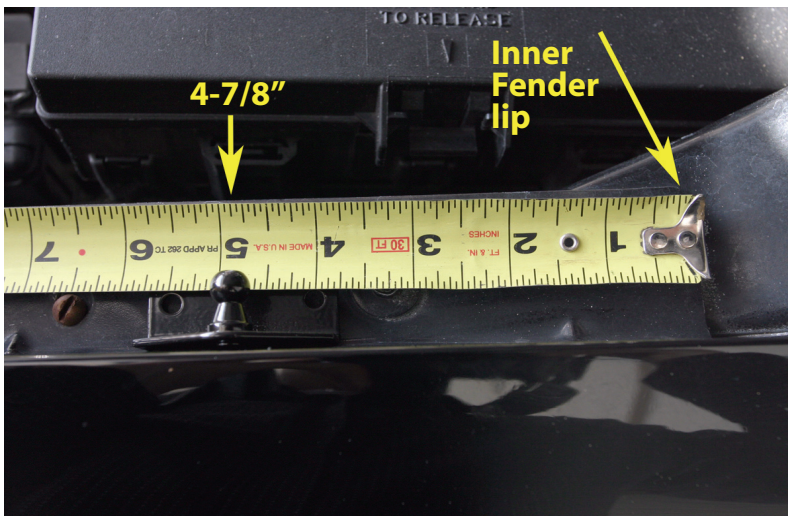
Step 8 - Repeat steps 3-7 and install the passenger side hood bracket.

A. The hood has a symmetrical under structure. Repeat Steps 3-7 to install the upper passenger hood bracket. Take your time and be sure to use the short headed rivets for the other hood bracket.

Step 9 - Position, mark & drill first hole for driver's side fender bracket.

A. Hold the bracket in position as shown. Back side of the bracket should be up against the fender with the ball-stud pointing inward or toward the engine. Measure 4-7/8" from the lip on the inner fender - the center of the bracket should align to this measurement.

B. Mark the center of the right hole, tap center and then drill using the same drill.



Step 10 - Attach the right side of the bracket to fender.

A. Insert rivet through bracket hole and fender. Rivet one side of bracket into place.



Step 11 - Attach opposite side of bracket.

A. Using a permanent marker, mark the 2nd hole of the fender bracket.

B. Using a center punch and a hammer, tap the center of the marked hole. This will help guide the drill bit and keep it from wandering

C. Drill hole, then rivet as in earlier steps.



Step 12 - Repeat steps 9-11 to attach the passenger fender bracket.

A. Repeat Steps 9-11 to attach the passenger side fender bracket. The vehicle is symmetrical so the same locators can be used. Feel free to measure off of key areas to ensure a symmetrical installation.

Step 13 - Cycle both gas springs - then install

A. **CYCLE EACH GAS SPRING BEFORE INSTALLING** - firmly hold a gas spring with both hands by the thick cylindrical end - firmly press down on the floor or carpet and compress the spring. Do this to both springs. Have a friend hold the hood up. Remove the stock prop rod assembly at this time.

B. Install the driver's side gas spring with the cylinder at the top (large end up). Be sure that the sockets snap securely onto the ball studs. Have a friend remain holding the hood up until Step 14 is completed. This procedure is most easily done if the hood ends are snapped on first and attach the lower fender ball studs last.



Step 14 - Install the gas springs.

A. Snap the gas springs onto the ball-studs. Be sure that the socket is firmly snapped onto the ball-stud before operating the hood lift system. You will not need the stock gas springs any longer, our system is a total replacement for these gas springs. All stock and aftermarket hoods are supported.

