



Manual Rev.  
1.01  
07/07

This manual is property of Redline Tuning LLC. Any unauthorized duplication or use without written permission from Redline Tuning LLC, violates Copyright laws. Copyright © 2003 Redline Tuning LLC. All Rights Reserved.



## 2001-06 Hyundai Elantra QuickLIFT Installation Guide

### Step 1 - Unpack QuickLIFT kit and verify contents.

Remove all items from the packing tube. You should have the following before beginning:

- \* (2) Gas springs (RT-QL-170-A4A) - Be sure to cycle them a few times before installing.
- \* (4) 3/16" Multi-grip Rivets - **shorter version for hood brackets.**
- \* (4) 3/16" Multi-grip Rivets - **longer headed rivet for the fender brackets.**
- \* (4) Steel brackets - 2 fender, 2 hood.
- \* Printed Color Instructions

### Step 2 - Gather the required tools.

- \* Power Drill
- \* 3/16" or indexed #11 drill bits
- \* Fine permanent marker or felt tip pen
- \* Tape Measure or ruler
- \* Masking Tape
- \* Hammer & center punch
- \* Rivet gun, capable of 3/16" rivets (most brands can handle this size)

Note: Only use the rivets supplied in the QuickLIFT kit.

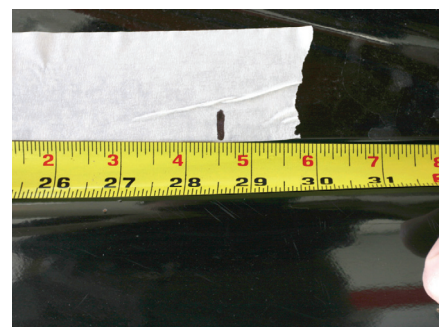
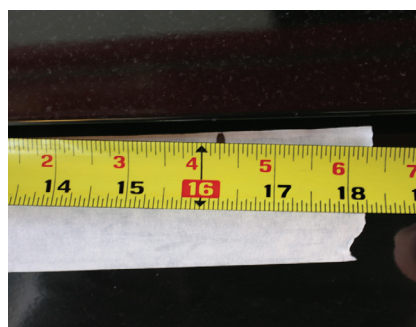
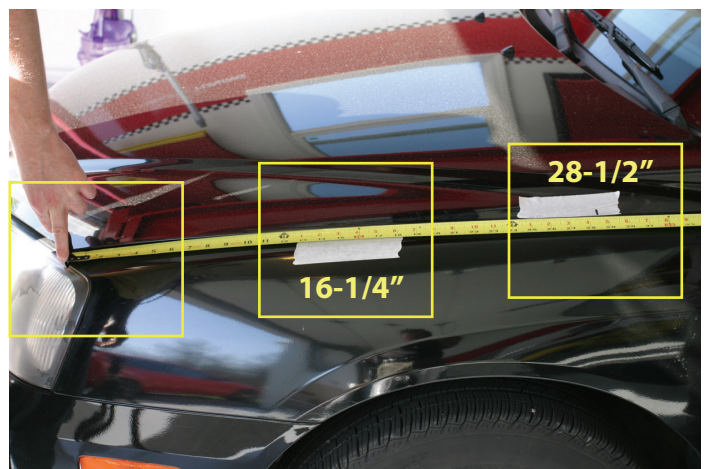


Recommended: Craftsman standard or Swivel Riveter (shown - 974749) - \$9.99 to \$17.99

### Step 3 - Mark bracket locations.

- Leave your hood closed.
- Using a piece of masking tape and a permanent marker, carefully measure from front corner of fender (above headlight) and along the fender line. Wrap the end of the tape measure over fender corner lip and place a mark on the fender masking tape at **16-1/4"** and on hood tape at **28-1/2"**

These marks will be used to align the centerline of the bracket's ball-stud in the next step.



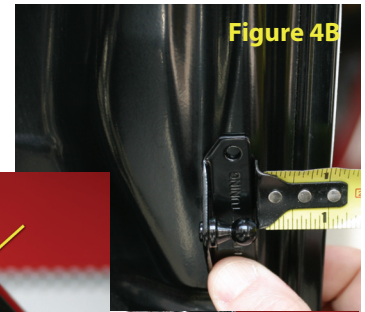
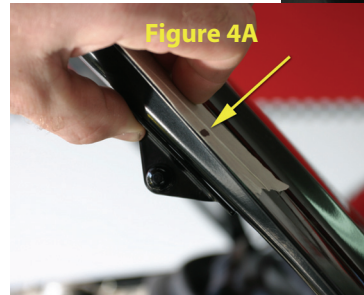
Hyundai Elantra 01-06 Hood QuickLIFT

## Step 4 - Align bracket and mark 1st hole for drilling.

A. Align the center of the bracket with the mark you just made on the hood. You will need to view the hood directly from the side as shown in **Figure 4A**. The bracket should sit on the flat hood frame tucked up against the hood's skin **1" from edge of hood** with the ball stud facing outward (away from the engine) **Figure 4B**.

B. Holding bracket in place, mark the center of the lower hole using a permanent felt tip marker. Be sure the bracket is straight and sitting flat against the hood's frame.

C. Set bracket aside. Using a center punch and a hammer, tap the center of the mark you just made



## Step 5 - Drill #11 indexed bit hole, or 3/16" hole.

A. Carefully drill the hole as shown to the right using a **(#11 indexed bit)** or **(use 3/16" bit if #11 bit is not available)**.

If you do not have a #11 indexed bit, you can use the 3/16" bit, however you may have to test fit the rivet and slightly ream hole until rivet fits tightly through bracket and hole - 3/16" is slightly smaller than the #11 bit.

**Wrap a piece of electrical tape around the drill bit about 1/4" from the tip to prevent the bit from denting the hood skin. Use new and sharp bits!**



## Step 6 - Rivet lower end of bracket to hood using SHORT HEADED RIVET.

A. Hold the bracket in position.

B. With the bracket lined up again, place a **short headed rivet** through the bracket and hole with the long stem sticking outward - shown to the right. The rivet may require a few twists while pushing it in.

C. Check to be sure your rivet gun has the **3/16"** rivet head installed, then slide rivet gun onto rivet. While applying downward force on rivet and bracket, firmly squeeze riveter handle multiple times until rivet gun pops and snaps off the rivet stem.



**Riveting Tips:**  
Visit <http://www.redlinetuning.com/QL-tips.html>

## Step 7 - Drill and rivet second hole - USE SHORT HEADED RIVETS ONLY FOR HOOD.

A. Reposition or rotate bracket into the proper position against hood lip. Carefully drill the second hole through bracket hole and hood.

Wrap end of drill bit 1/4" down from tip with electrical tape to keep drill bit from pulling through and hitting hood skin.



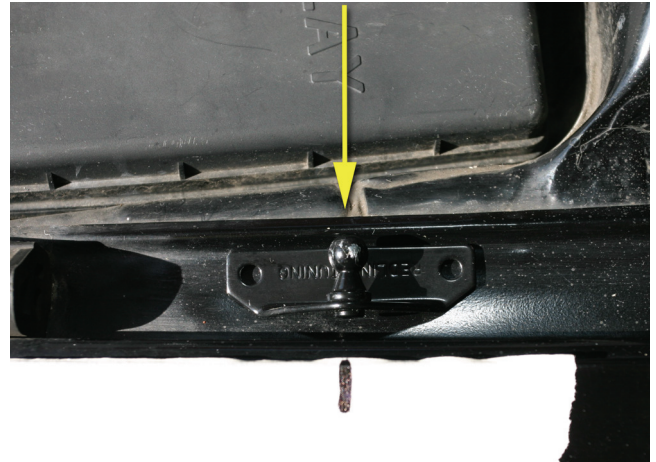


## Step 8 - Repeat steps 3-7 and install the passenger side hood bracket.

A. The hood has a symmetrical under structure. Repeat Steps 3-7 to install the upper passenger hood bracket. Take your time and be sure to use the short headed rivets for the other hood bracket.

## Step 9 - Position and mark first hole for driver's side fender bracket.

A. Hold the bracket in position as shown to the right with the ball-stud in-line with the mark on the fender tape. The ball stud should be pointing inward or toward the vehicle and tucked up tightly against the inner fender.



## Step 10 - Mark hole center before drilling lower or left hole using 3/16" drill bit.

- Mark center of right hole using a permanent marker.
- Using a center punch and a hammer, tap the center of the marked hole. This will help guide the drill bit and keep it from wandering when drilling.
- Drill the hole at the marked position using a sharp **3/16" or indexed #11 drill bit**.



## Step 11 - Attach the right end of the bracket to fender.

- Using a color matching paint, touch up the area where you just drilled the hole.
- Rivet the bracket into place as described in an earlier step using only the **LONGER HEADED RIVET**.

## Step 12 - Mark center with marker and indent with center punch.

- Using a permanent marker, mark the 2nd hole of the fender bracket. **Be sure the bracket is tucked up tightly to the fender lip.**
- Using a center punch and a hammer, tap the center of the marked hole. This will help guide the drill bit and keep it from wandering.



## Step 13 - Drill second hole and attach bracket.

- Carefully drill the hole as shown to the right using a **(#11 indexed bit)** or **(use 3/16" bit if #11 bit is not available)**.
- Rivet bracket into place using the **longer headed rivet**.

## Step 14 - Repeat steps 9-13 to attach the passenger fender bracket.

- Repeat Steps 9-13 to attach the passenger side fender bracket. The vehicle is symmetrical so the same locators can be used. Feel free to measure off of key areas to ensure a symmetrical installation.

## Step 15 - Cycle both gas springs - then install

- CYCLE EACH GAS SPRING BEFORE INSTALLING** - firmly hold a gas spring with both hands by the thick cylindrical end - firmly press down on the floor or carpet and compress the spring. Do this to both springs. Have a friend hold the hood up. Remove the stock prop rod assembly at this time.
- Install the driver's side gas spring with the cylinder at the top (large end up). Be sure that the sockets snap securely onto the ball studs. Have friend remain holding the hood up until Step 16 is completed. This procedure is most easily done if the hood ends are snapped on first and attach the lower fender ball studs last.

## Step 16 - Install the gas spring locking clips.

- Insert the gas spring locking clips and be sure that they are snapped on securely. These will lock the ball-studs onto the sockets and keep the gas springs in place.

