



Manual Rev.  
1.03  
2/09

This manual is property of Redline Tuning LLC. Any unauthorized duplication or use without written permission from Redline Tuning LLC, violates Copyright laws. Copyright © 2003 Redline Tuning LLC. All Rights Reserved.



## 2002-06 Nissan Altima QuickLIFT Installation Guide

### Step 1 - Unpack QuickLIFT system and verify contents.

Remove all items from the packing tube. You should have the following before beginning:

- \* (1) Gas springs - Part No. RT-QL-200-5A
- \* (2) Threaded ball studs
- \* (4) Washers
- \* (2) Locking nuts
- \* (2) fender brackets and steel rivets
- \* Printed Color Instructions

### Step 2 - Gather the required tools.

Please gather the following tools before you begin the installation

- \* Power Drill
- \* 5/16" & 3/16" drill bits - SHARP and NEW!
- \* 13mm socket and socket wrench
- \* 1/2" open end wrench
- \* Rivet gun
- \* hammer and center punch

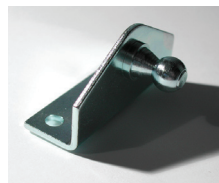


Recommended: Craftsman standard or Swivel Riveter (shown - 974749) - \$9.99 to \$17.99

### Step 3 - Mark fender bracket centerline.

A. Gather masking tape, tape measure and a permanent marker.

B. Measure from the front corner of the fender as shown to right **10"** and place mark on the fender tape - use this line to place the bracket at the centerline of the ball stud at a later step.



Fender Brackets



## Step 4 - Carefully measure and drill 3/16", then 5/16" hole in driver's side hood hinge.

A. Carefully measure **1-1/2"** down along the hood's hinge as shown. Place a line at the **1-1/2"** measurement as shown to the right.

B. Using a center punch, mark the center of the hinge on the line you just drew - you should find the midpoint between the edge of the metal and where the metal begins to round - shown as a yellow dot to the right.

B. Drill hole at mark using a 3/16" drill bit, then drill again using a 5/16" drill bit. This will enlarge the hole to the proper size.



## Step 5 - Clean and touch up hole using vehicle touch up paint.

A. Clean the work area around the hole you just drilled. Using touch up paint supplied with your vehicle, touch up the hole you just drilled. Allow to dry before starting the next step.



Copyright © 2003 Redline Tuning LLC. All Rights Reserved.

## Step 6 - Install the ball-stud onto hood hinge.

A. Gather one ball-stud, two washers and one locking nut. Place two washers onto the threaded bolt.

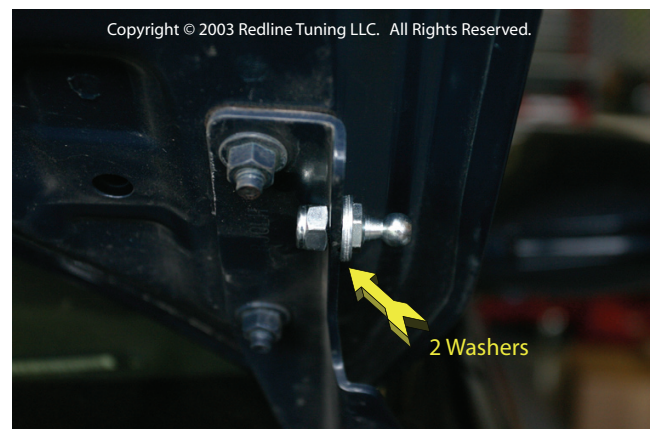
B. Install the threaded end through the hole with the ball-stud pointing outward or away from the vehicle with the washer and locking nut on the inside.

C. Be sure to position the ball-stud closest to the hood in the hole - shown to the right.

D. Using the 13mm socket and wrench, tighten down the ball stud.



Copyright © 2003 Redline Tuning LLC. All Rights Reserved.



Copyright © 2003 Redline Tuning LLC. All Rights Reserved.

2 Washers



## Step 7 - Repeat steps 3-6 and install the passenger side hood ball-stud.

A. First, remove the washer hose holder from the hole on the passenger side hood hinge. You will then drill out this hole using the same **5/16"** drill bit. Take your time. Install the ball-stud with two washers through the hole and tighten the assembly down with the lock nut on the inside.

B. Bend down the small plastic hose holder that lies in the fender lip shown to the right. This will allow the gas spring to close without interference once they are installed in the last step.

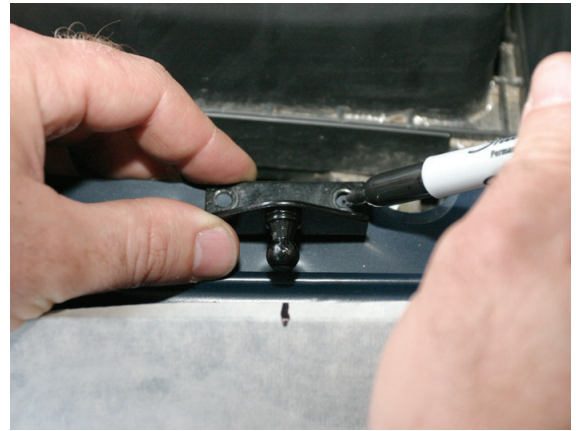


## Step 8 - Position and mark first hole for driver's side fender bracket.

A. Hold the bracket in position as shown to the right. The bracket should sit with the inside edge lined up with the inner fender edge. The ball stud should be pointing outward or away from the vehicle and approximately **10"** from the front corner of the fender to the center of the bracket.

The bracket will be touching the angled corner of the fender lip.

B. Mark upper hole using a fine permanent marker.



## Step 9 - Mark hole center before drilling upper or right hole using 3/16" drill bit.

A. Using a center punch and a hammer, tap the center of the marked hole. This will help guide the drill bit and keep it from wandering during the following step.

B. Drill the upper or right hole at the marked position using a sharp **3/16"** drill bit.



## Step 10 - Rivet the upper or right end of the bracket to fender.

- A. Hold the bracket in position.
- B. With the bracket lined up again, place the rivet through the bracket and hole with the long stem sticking outward. The rivet may require a few twists while pushing it in.
- C. Check to be sure your rivet gun has the **3/16"** rivet head installed, then slide rivet gun onto rivet. While applying downward force on rivet and bracket, firmly squeeze riveter handle multiple times until rivet gun pops and snaps off the rivet stem.



## Step 12 - Drill and rivet second hole

- A. Reposition or rotate bracket into the proper position in case the bracket moved. Carefully drill the second hole through bracket hole and fender.
- B. Rivet bracket in place.



## Step 13 - Repeat steps to install fender bracket on passenger side.

Complete the same procedure for the passenger side of the vehicle. Be sure to move the washer hose that runs beneath the fender lip before drilling the holes.

## Step 14 - Cycle both gas springs - then install

- A. **CYCLE EACH GAS SPRING BEFORE INSTALLING** - firmly hold a gas spring with both hands by the thick cylindrical end - firmly press down on the floor or carpet and compress the spring. Do this to both springs. Have a friend hold the hood up. Remove the stock prop rod assembly at this time.
- B. Install the driver's side gas spring with the cylinder at the top (large end up). Be sure that the sockets snap securely onto the ball studs. Have friend remain holding the hood up until Step 14 is completed. This procedure is most easily done if the hood ends are snapped on first and attach the lower fender ball studs last.

Take your time to check over the installation and slowly open and close the hood a few times until the gas springs self-lubricate themselves.